



JUSTICE FACILITIES

FIRM PROFILE

MW ENGINEERS

MW Engineers is a professional consulting firm that has provided mechanical, electrical, and plumbing design services for complex facilities in the United States and internationally since 1984. Today, we have a team of over sixty professionals, including engineers (of which 19 are PEs), designers, drafters, and business administration experts. We have worked in over 20 countries and five continents, providing our clients with safe, healthful, and sustainable spaces to work, learn, teach, and innovate. At MW, we design systems with long-term stability and performance in mind, ensuring that the needs of building owners and operators are always met. MW is committed to designing facilities that prioritize system reliability and ensure our clients receive the best possible service. Our services include:

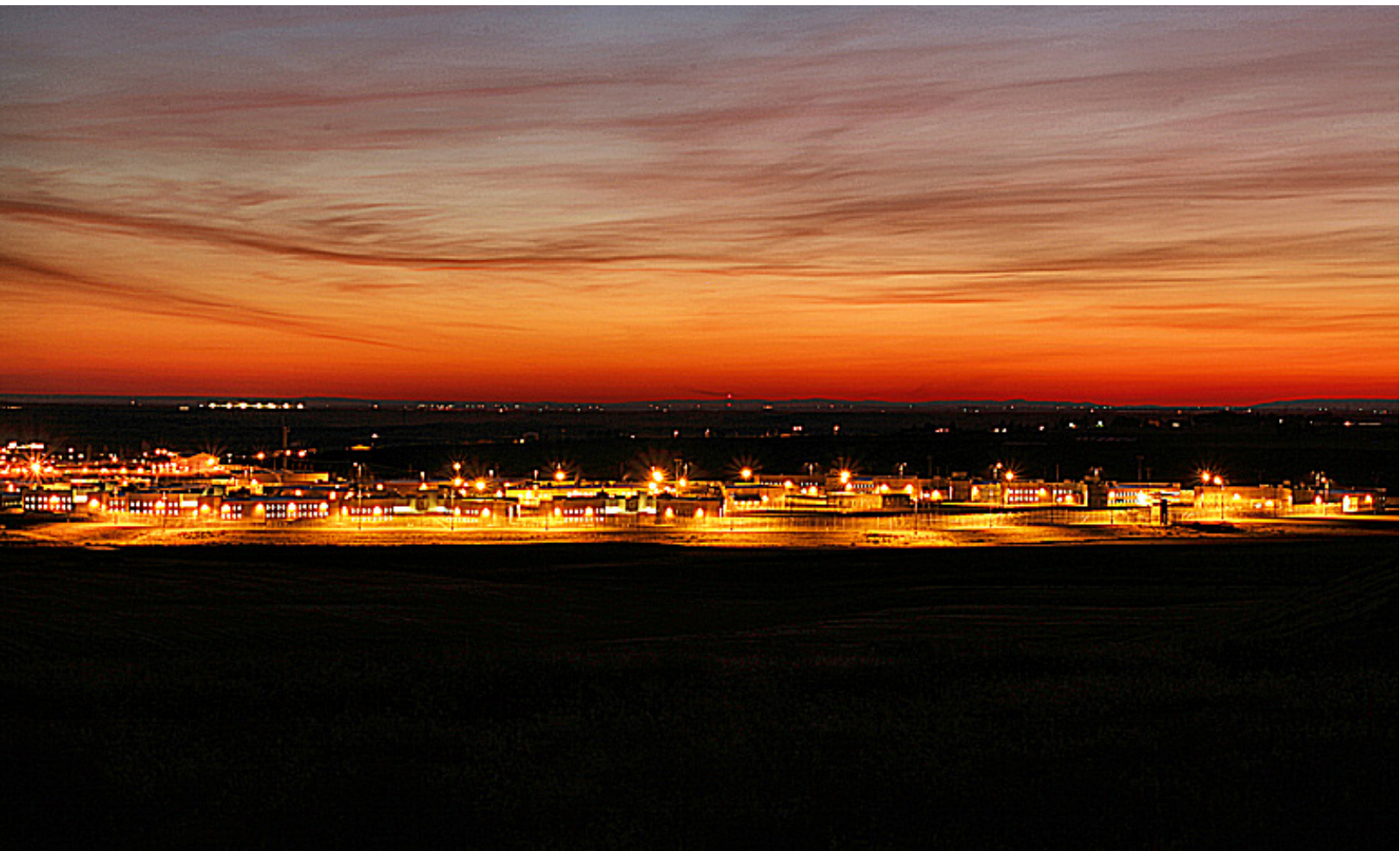
MECHANICAL

- HVAC
- Plumbing
- Specialty Gas/Water/Liquid Systems
- Alternative Energy Systems
- Temperature Controls
- Energy Management

ELECTRICAL

- Architectural Lighting Design
- Power Distribution/Emergency Power Generation Systems
- Lighting Controls
- Telecommunications
- Audiovisual Systems
- Control/Alarm Monitoring Systems

Cover Photo: Guard Tower at Coyote Ridge Corrections Center
Below: Coyote Ridge Corrections Center at dusk



QUALIFICATIONS

MW has completed justice projects throughout the Western United States and Internationally, with sizes ranging from 10,000 to 565,000 SF and values ranging from less than \$1 million to more than \$230 million.

PORTFOLIO

The following highlights MW Engineers' experience with justice facilities:

Airway Heights Washington State Corrections Center

Airway Heights, WA

- 1024 Bed Facility
- 200 Bed Minimum Security Facility
- 512 Bed Facility
- ADAL C4 + C5
- Boiler Plant Controls
- Boiler Plant Expansion
- Dining & Industries Additions
- Emergency Waterline Replacement
- New Building C2 Visitation
- New Treatment Program Building
- Nurse Call System
- Replacement of Heating and Cooling Loop Distribution Line
- Utilidor Trench Design

Benton County Justice Center

Kennewick, WA

Butte Silverbow Detention Center

Butte, MT

Chelan County

Wenatchee, WA

- Courthouse
- Juvenile Detention Facility
- Law & Justice Facility

Coyote Ridge Washington State Corrections Center

Connell, WA

- 2000 Bed Correctional Facility
- Correctional Industries
- Hybrid Housing (4 units)
- Intake / Visiting

- Laundry / Food Factory
- Medical / Food Service
- Medium Housing (4 units)
- Outside Administration
- Programs
- Recreation
- Segregation Housing
- Warehouse

Douglas County Juvenile Facility

Douglas County, OR

Elmwood Correctional Facility

Milpitas, CA

EUSA Correctional Facility

USAG Humphreys, Korea

Active Military Base

Geiger Correctional Facility Pre-Design

Spokane, WA

Grant County Juvenile Detention Facility

Grant County, WA

Monroe Correctional Complex

Monroe, WA

- Electrical Distribution and Motor Control Center Replacement
- High Pressure Steam Line Extension
- Intensive Management Unit
- Miscellaneous Projects
- Segregation Unit
- Special Offenders' Unit

Nez Perce County Detention Facility

Nez Perce County, ID

Oregon Department of Corrections IMU Recreation Yards

State of Oregon

Oregon State Penitentiary Electrical Systems Upgrade
Salem, OR

Oregon Youth Authority Maclaren Youth Correctional Facility

Woodburn, OR

- Grover Cottages Renovation and Addition

Pullman City Police Facility

Pullman, WA

Richland County Justice Center Security Electronics Systems

Sidney, MT

Santa Clara County

Santa Clara, CA

- Courts Facility
- Main Police Facility

Shelton Corrections Center Health Facility

Shelton, WA

Spokane County Detention Facility

Spokane, WA

Washington State Correctional Center for Women

Gig Harbor, WA

- Administration Building

- Autocall Fire Alarm System
- Boiler Plant Expansion
- Health Facility
- Laundry Relocation Study
- Medium Voltage Loop Upgrade
- Phases I, II, III, IV
- R1& R2 Roof Replacement
- Site Electrical Upgrades
- Site Steam Distribution
- Special Needs Unit

Washington State Department of Corrections

State of Washington

- New Westside Reception Center Pre-Design
- Security Standards Development
- Statewide Security and Fire/ Smoke Alarm Building Assessment

Washington State Penitentiary

Walla Walla, WA

- BAR Units Close Custody Conversion
- Intensive Management Unit Renovation
- Masterplan

Below: Courts Entry at Benton County Justice Center





RICHLAND FEDERAL BUILDING ELECTRICAL UPGRADE

Owner: General Service Administration

Location: Richland, WA

Services: Electrical

Project Size: 386,561 GSF comprised three separate sections; US Post Office, a seven-story office tower, and a low-rise courthouse section.

The project consists of the complete replacement of the existing electrical distribution system between the primary service connection point to the branch circuit panelboard level within an occupied and operational facility. Existing electrical distribution equipment largely dated back to original construction in 1964 and was obsolete and contained numerous personnel safety hazards. New electrical distribution equipment included primary switchgear, distribution switchboards, transfer switches, feeder and plug-in busway, dry-type transformers, branch panelboards, motor control centers, and robust solid-state metering to support current electric loads and future tenant improvements.



integrus
ARCHITECTURE



US ARMY REGIONAL CORRECTIONAL FACILITY

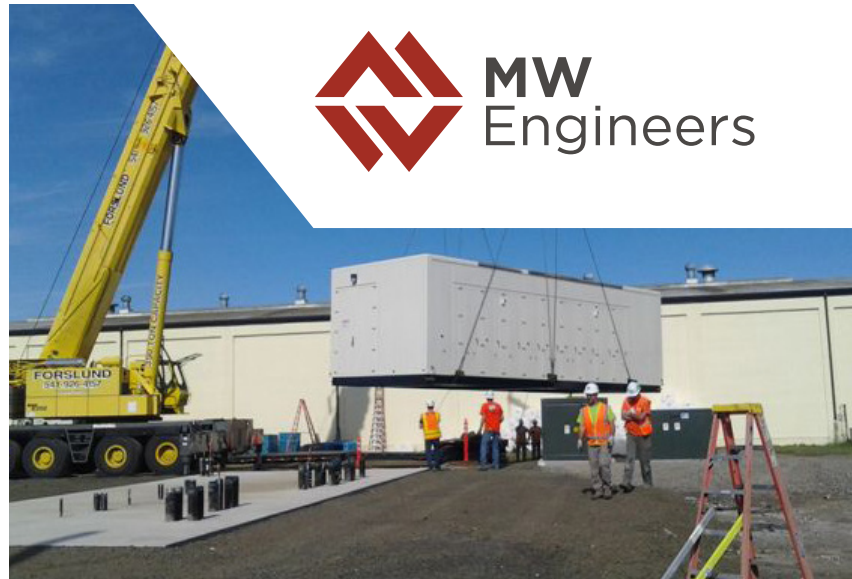
Owner: Eighth Army EUSA Joint Correctional Facility

Location: USAG Humphreys, Republic of Korea

Services: Mechanical, Electrical, Architectural Lighting, Telecommunications, Technical Security

Project Size: Confidential

This housing facility provides secure confinement pre/post-trial, segregation, and Military Extraterritorial Jurisdiction Act personnel, medical services, intake/discharge, food service and dining, inmate programs, recreation, medical health, administrative offices, and training rooms in a 3-acre fenced perimeter. Emergency and standby power provided by an on-site generator. Integrated technical security systems provide control of all water service and exterior doors and gates, intercommunications devices, video surveillance cameras, and duress alarm buttons from both Housing and Master control rooms with fail-secure cut-over between rooms.



OREGON STATE PENITENTIARY - ELECTRICAL SYSTEMS UPGRADE & RENOVATION

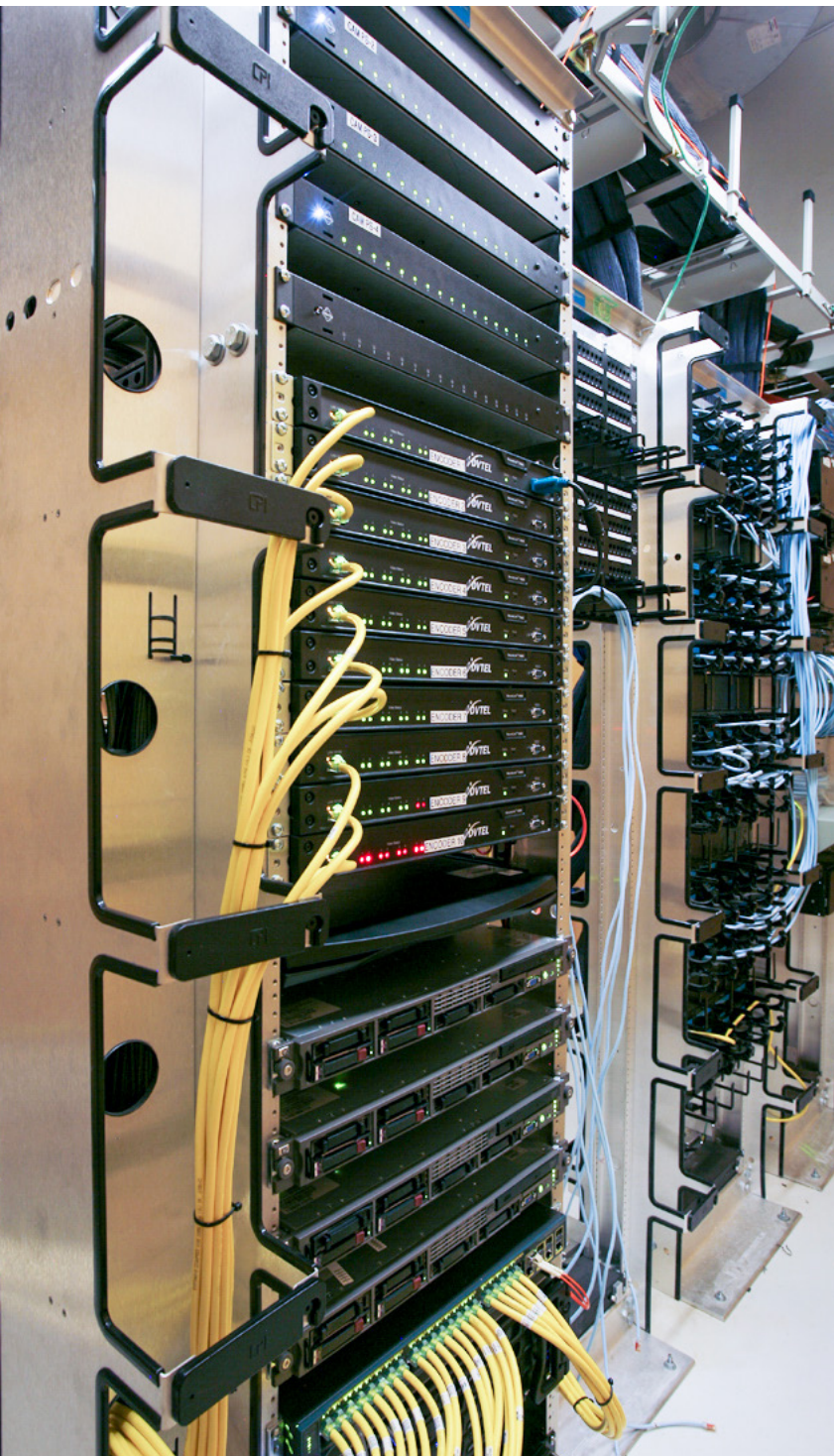
Owner: Oregon State Department of Corrections

Location: Salem, OR

Services: Electrical

Project Size: Entire Campus; 2000+ bed maximum security facility

The project consists of a new medium voltage service and distribution system including electric utility primary service switchgear with maintenance vestibule, parallel standby power generators, underground feeders, pad mounted switches and transformers, distribution switchboards, and selected panelboards within an operational detention facility. Customer-owned primary feeders and equipment were constructed in a loop configuration outside the historic territorial prison walls to allow maintenance outside the security perimeter. Low-voltage feeders extended under the prison walls and supplied buildings within the security perimeter.



WASHINGTON CORRECTIONAL CENTER FOR WOMEN - HEALTHCARE FACILITY

Owner: Washington State Department of Corrections

Location: Gig Harbor, WA

Services: Electrical, Architectural Lighting, Telecommunications, Technical Security

Project Size: 20,080 SF (minimum, medium, and maximum security)

The project consists of a new medium security healthcare (I-2) facility including Close Observation and Acute Care units for inpatient services, a Trauma Room, medical clinic and dentistry for outpatient services, and administrative office. As an I-2 healthcare facility, the building required a dedicated engine-generator system with multiple transfer switches to derive the separate branches of power for a hospital.



COYOTE RIDGE CORRECTIONS CENTER

Owner: Washington State Department of Corrections

Location: Connell, WA

Services: Mechanical, Electrical, Architectural Lighting, Telecommunications, Technical Security

Project Size: 565,000

Certified LEED Gold


This 2,000-bed medium security facility consists of twenty campus-style buildings including maximum security housing and eight medium security housing units, correctional industries, intake/discharge, food service and dining, maintenance, inmate programs, recreation, and a medical health facility within a 60-acre fenced security perimeter and administrative, utility, maintenance, and warehouse outside the security perimeter. Customer-owned medium voltage distribution and telecommunications infrastructure are distributed underground to each building.



 **509.838.9020**

 **contact@mwengineers.com**

 **mwengineers.com**

 601 W First Ave, Ste 1300
Spokane, WA 99201